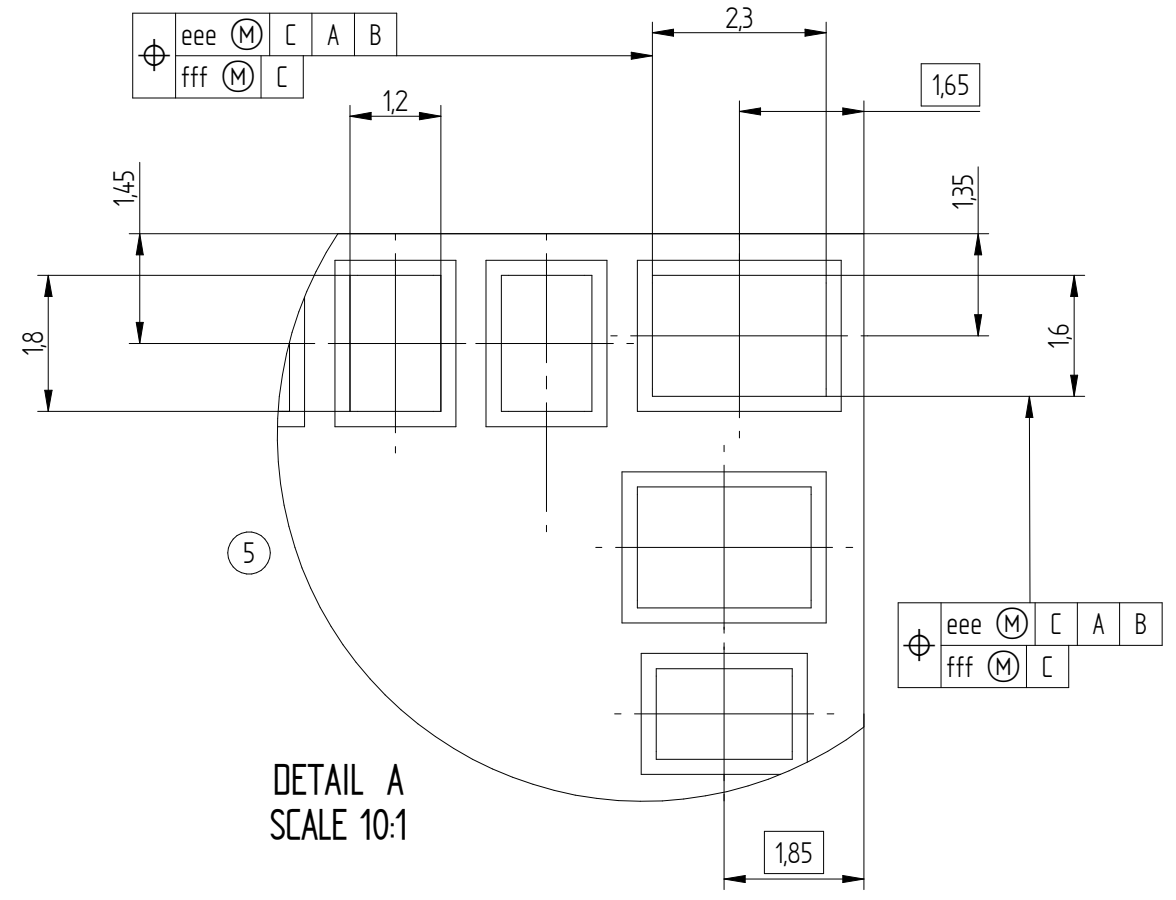
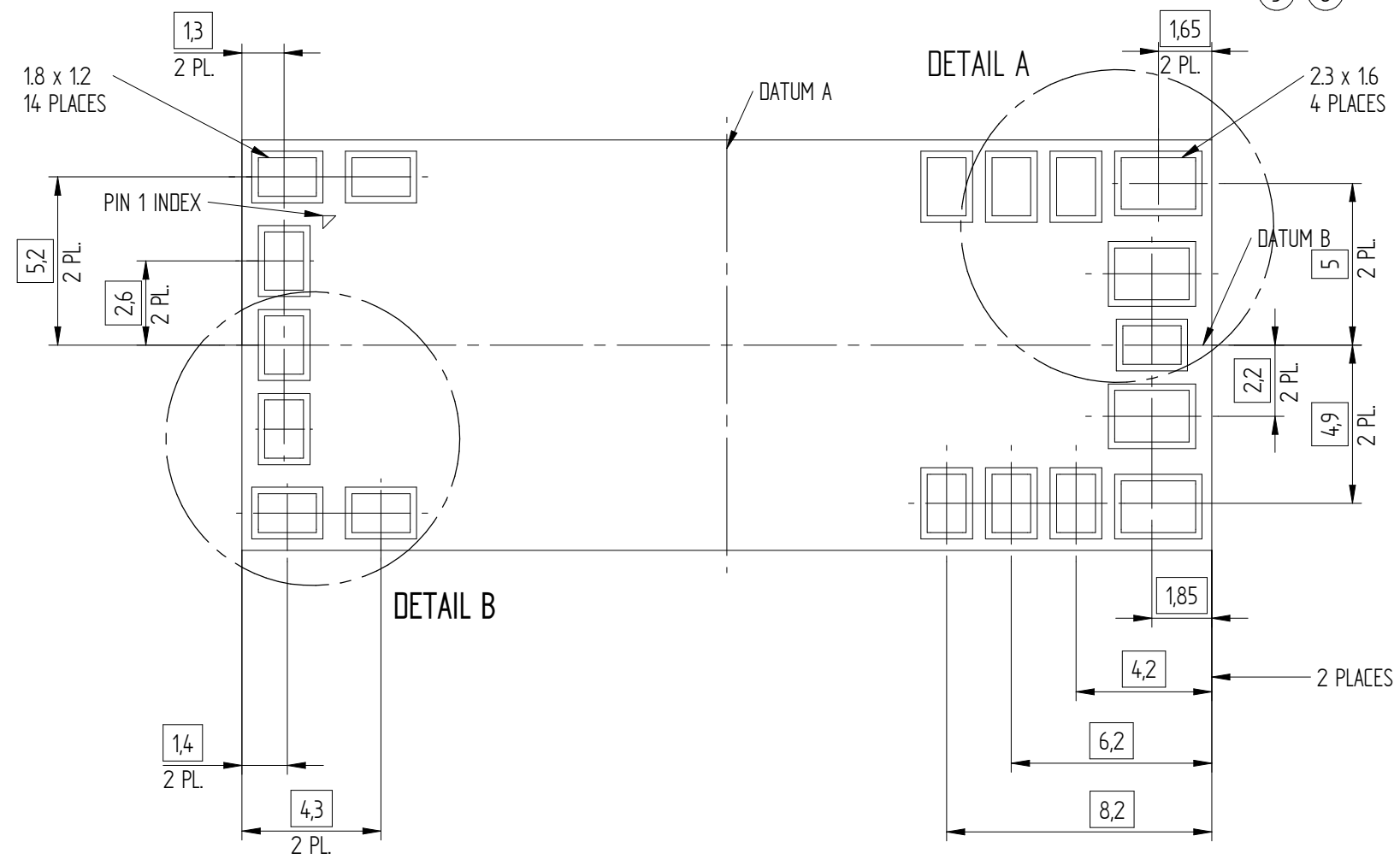


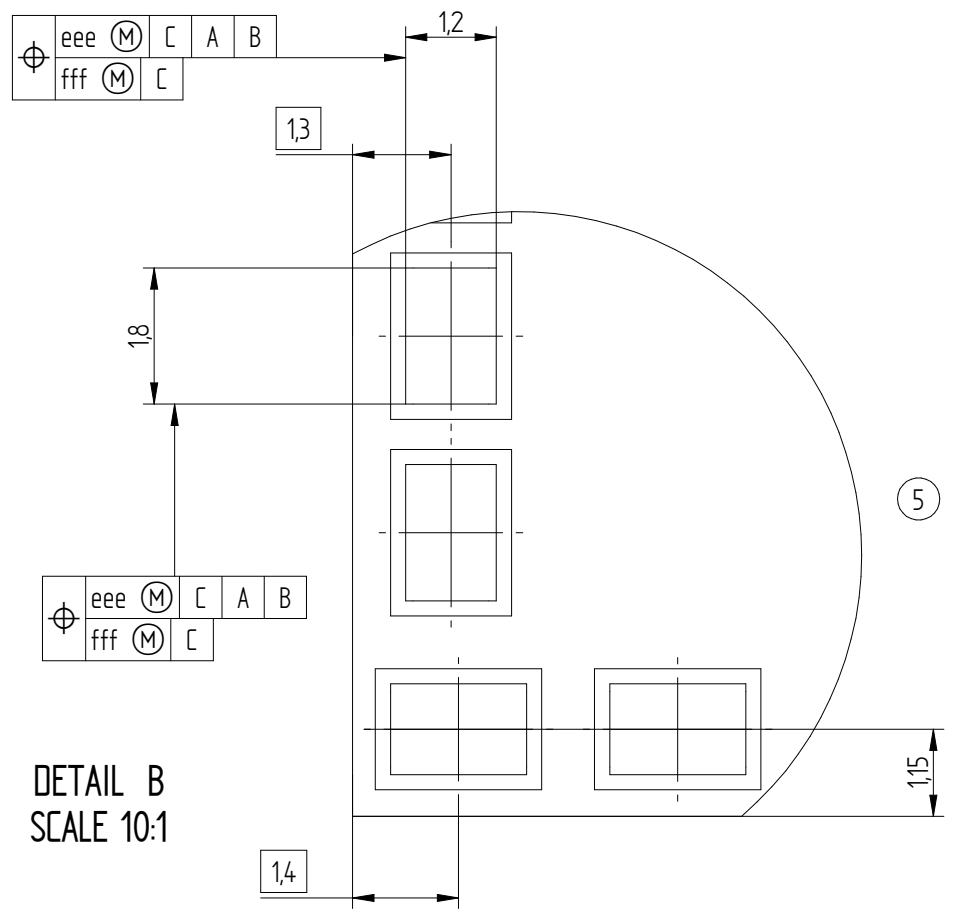
TOP VIEW



DETAIL A
SCALE 10:1



BOTTOM VIEW



DETAIL B
SCALE 10:1

NOTES: see page 2 for tolerancing

Scale 5:1

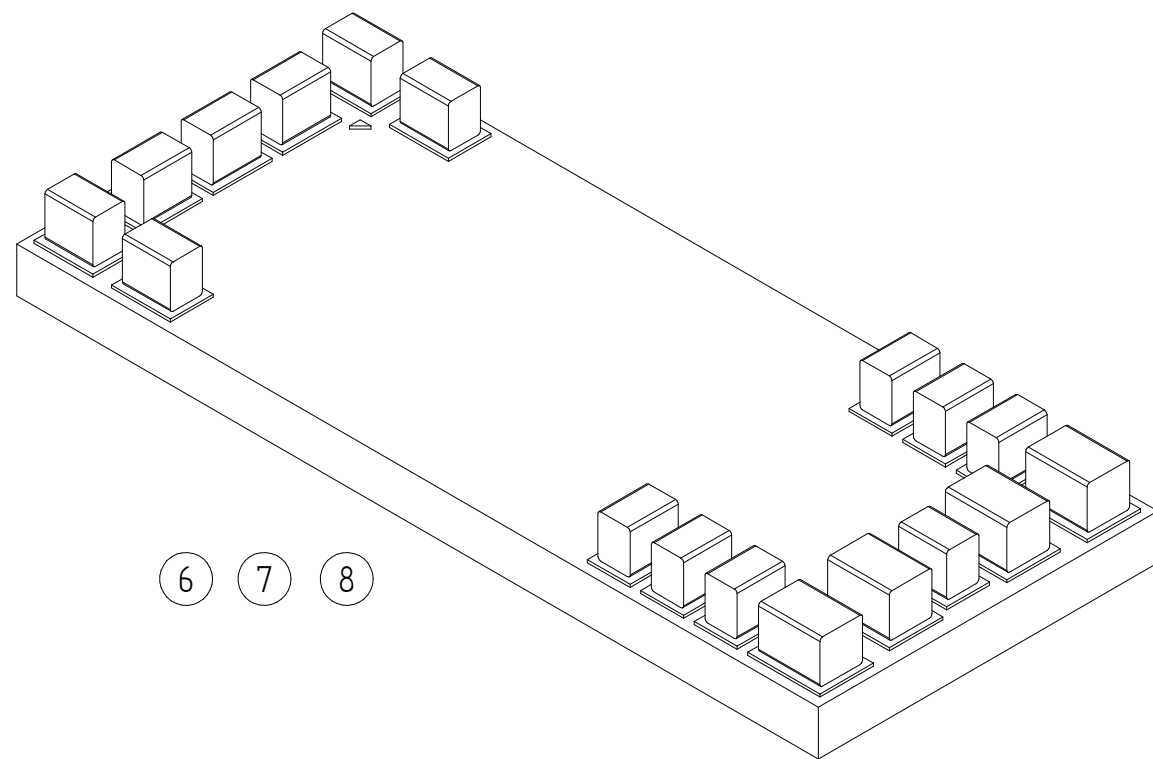
POWER STAMP ALLIANCE

Title
PSA S1 30 x 12.7mm SATELLITE Module

Description
Package Drawings

Engineering change order :

Designed	RG / GM	01 / 12 / 17
Checked	G. Mauri	19 / 04 / 18
Approved	MA / AB	23 / 04 / 18
Revised	G. Mauri	19 / 04 / 18



BOTTOM VIEW (typical)

DIMENSION VARIATIONS	
REF.	TOLERANCE OF FORM AND POSITION
aaa	0.15
eee	0.15
fff	0.08

NOTES:

1. DIMENSIONING AND TOLERANCING PER ASME Y14.5M-1994
2. ALL DIMENSIONS ARE IN MILLIMETERS
3. DATUM "C" IS THE SEATING PLANE
4. DETAILS OF PIN 1 IDENTIFIER ARE OPTIONAL, BUT MUST BE LOCATED WITHIN THE ZONE INDICATED, THE PIN IDENTIFIER MAY BE EITHER A LABEL, A MARKED FEATURE OR A CHAMFERED EDGE
5. EXPOSED METALLIZED PADS ARE CU PADS WITH SURFACE FINISH PROTECTION
6. BOTTOM VIEW OF TYPICAL MODULE PCB SHOWN FOR ILLUSTRATION PURPOSES ONLY
7. OVERALL MODULE HEIGHT NOT TO EXCEED 18mm
8. SEE INDIVIDUAL MODULE DATA SHEET FOR DETAILED TOP AND SIDE VIEW

Scale 5:1	Title PSA S1 30 x 12.7mm SATELLITE Module	Designed	RG / GM	01 / 12 / 17
	Description Package Drawings	Checked	G. Mauri	19 / 04 / 18
	Engineering change order :	Approved	MA / AB	23 / 04 / 18
	This document and the data disclosed herein is not to be reproduced, used or disclosed in whole or in part to anyone without the permission of the Power Stamp Alliance.	Revised	G. Mauri	19 / 04 / 18
			Revision: 03	Pag. 2 di 2